

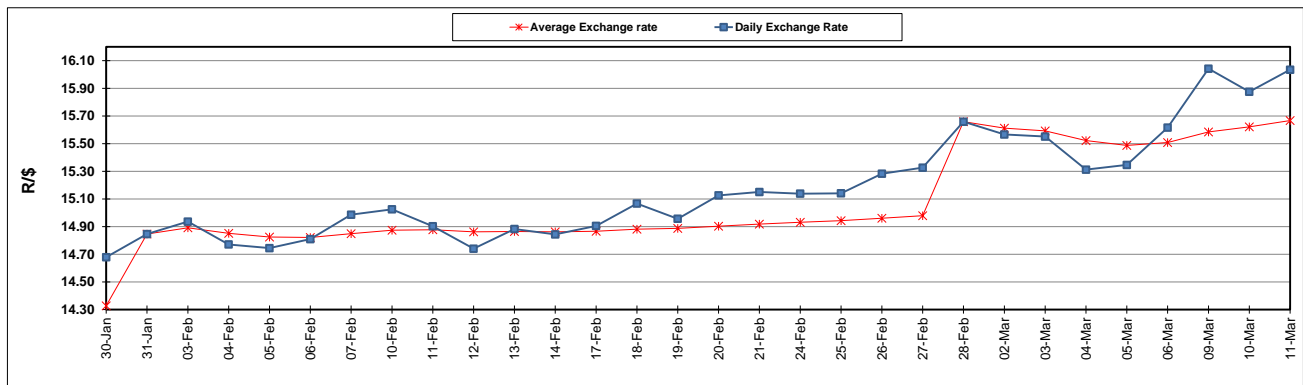
	PETROL 95 ULP	PETROL 93 ULP & LRP	DIESEL 0.05%	DIESEL 0.005%	ILL. PAR.
GAUTENG PUMP PRICE (SA c/l) AS FROM 04/03/2020	1,584.000	1,552.000	-	-	-
WHOLESALE PRICE (SA c/l) AS FROM 04/03/2020	-	-	1,403.260	1,408.660	856.728
SINGLE NATIONAL MAXIMUM RETAIL PRICE	-	-	-	-	1,085.000
BASIC FUEL PRICE - 11/03/2020 (SA c/l)	497.197	486.186	540.499	543.332	519.003
PRESS RELEASE CONTRIBUTION TO BFP 04/03/2020 - 11/03/2020 (SA c/l)	667.970	645.970	683.630	689.030	666.128
UNIT OVER/(UNDER) RECOVERY - 11/03/2020 (SA c/l)	170.773	159.784	143.131	145.698	147.125
AVERAGE BASIC FUEL PRICE 28/02/2020 - 11/03/2020	575.921	564.063	597.914	601.725	578.061
AVERAGE UNIT OVER/(UNDER) RECOVERY 28/02/2020 - 11/03/2020	98.383	88.240	103.716	105.305	110.734

ANALYSIS MOVEMENT OF AVERAGE OVER/(UNDER) RECOVERY

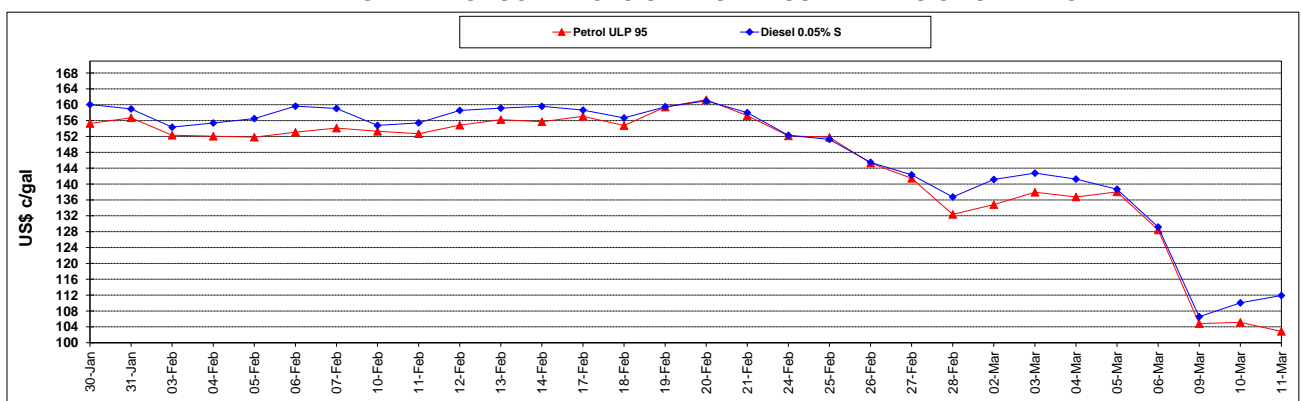
	PETROL 95	PETROL 93	DIESEL 0.05%	DIESEL 0.005%	ILL. PAR.
- MOVEMENT IN INTERNATIONAL PRODUCT PRICES	123.673	113.010	129.973	131.729	136.119
- MOVEMENT IN EXCHANGE RATE	(25.291)	(24.770)	(26.257)	(26.424)	(25.385)
AVERAGE UNIT OVER/(UNDER) RECOVERY 28/02/2020 - 11/03/2020	98.383	88.240	103.716	105.305	110.734

R/\$ EXCHANGE RATE - (R/\$ 16.0346 - 11/03/2020)

EXCHANGE RATE USED IN BASIC FUEL PRICE



INTERNATIONAL PRODUCT PRICES OF BASKET USED IN BASIC FUEL PRICE



BASIC FUEL PRICE IN SA CENTS PER LITRE

